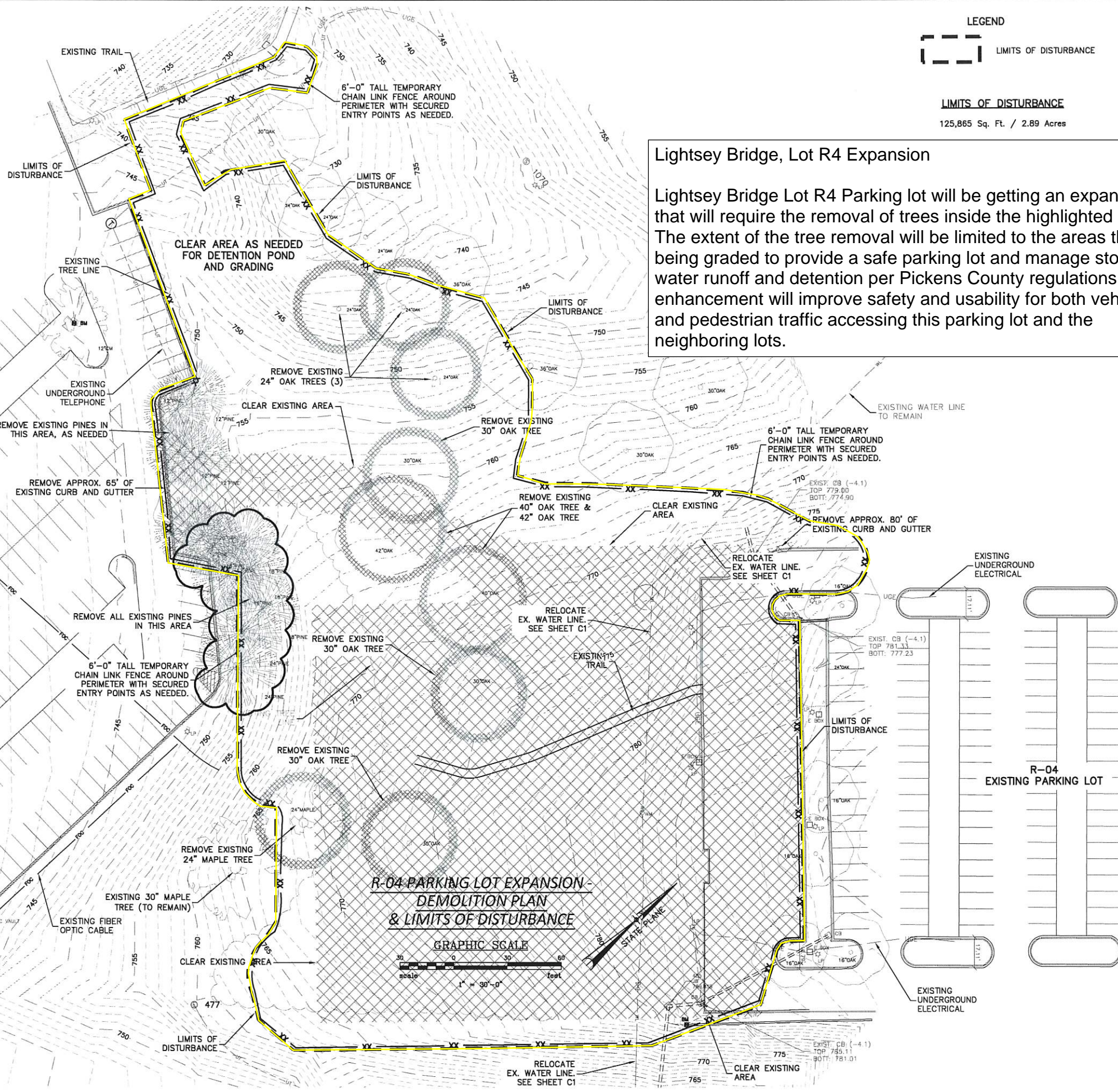


THIS DRAWING IS THE PROPERTY OF SUMMIT ENGINEERING GROUP, INC. AND IS NOT TO BE REPRODUCED OR TRANSMITTED IN ANY FORM OR BY ANY MEANS, ELECTRONIC OR MECHANICAL, INCLUDING PHOTOCOPYING, RECORDING, OR BY ANY INFORMATION STORAGE AND RETRIEVAL SYSTEM. ANY UNAUTHORIZED USE OF THIS DRAWING IS STRICTLY PROHIBITED AND IS NOT TO BE USED ON ANY OTHER PROJECT.

N:\PROJECTS\22067 - CU PARKING 2023\DWG\PARKINGLOT-R4\22067-BASE-R4-PARKINGLOT.DWG 3/16/2024 9:54:54 AM



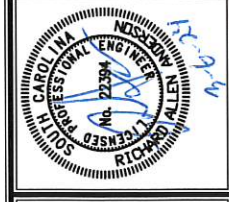
**LEGEND**  
  
 LIMITS OF DISTURBANCE  
 125,865 Sq. Ft. / 2.89 Acres

**Lightsey Bridge, Lot R4 Expansion**

Lightsey Bridge Lot R4 Parking lot will be getting an expansion that will require the removal of trees inside the highlighted area. The extent of the tree removal will be limited to the areas that are being graded to provide a safe parking lot and manage storm water runoff and detention per Pickens County regulations. The enhancement will improve safety and usability for both vehicular and pedestrian traffic accessing this parking lot and the neighboring lots.

NO.	DESCRIPTION	DATE	BY

APPROVALS	PROJECT ENG.	DESIGNED BY:	DRAWN BY:	CHECKED BY:	APPROVED:
	RAA	RAA	CJD	JMC	RAA



**SUMMIT ENGINEERING GROUP, INC.**  
 ENGINEERS • PLANNERS • SURVEYORS  
 9601 Warren H. Abernathy Hwy.  
 Spartanburg, SC 29301  
 (864) 949-1111

**DEMOLITION PLAN AND LIMITS OF DISTURBANCE**  
 SHEET TITLE  
 DATE: JAN. 2024 SCALE: AS SHOWN

**R-04 PARKING LOT EXPANSION FOR CLEMSON UNIVERSITY**  
 PROJECT  
 PICKENS COUNTY SOUTH CAROLINA

N.B. NO.	SHEET
REF.	<b>C2</b>
PROJECT NO.	OF
<b>22067</b>	

FILE: Base-R4 Parking